

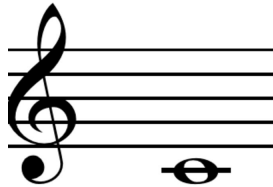


Can you identify if these music theory statements are **TRUE** or **FALSE**?



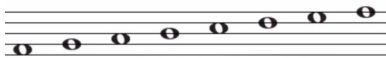
1) The treble clef is also known as the 'F Clef'?

TRUE      FALSE



2) The lowest note on a violin is middle C.

TRUE      FALSE



3) F minor has the same key signature as Ab minor.

TRUE      FALSE



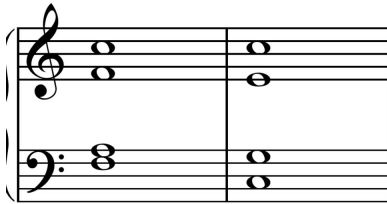
4) Bb is the enharmonic equivalent of G#.

TRUE      FALSE



5) The alto saxophone & the bassoon are in the same key.

TRUE                      FALSE



6) This is a plagal cadence.

TRUE                      FALSE



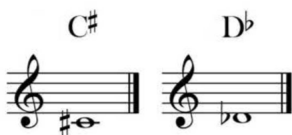
7) This is a quaver (eighth note) rest.

TRUE                      FALSE



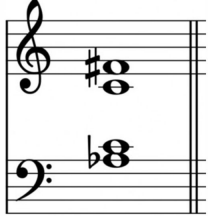
8) This note is equivalent to 3 and  $\frac{3}{4}$  crotchets (quarter notes).

TRUE                      FALSE



9) In meantone temperament, C# and D $\flat$  are the same note.

TRUE                      FALSE



10) If you're in C major, this chord is known as an 'Italian Sixth'.

TRUE                      FALSE



11) This is an imperfect cadence.

TRUE                      FALSE



12) These are the same note.

TRUE                      FALSE

13) 'Allargando' means you should play slower and louder.

## Allargando

TRUE                      FALSE

14) This is Lydian mode.



TRUE                      FALSE

This is a minor 7th chord.



TRUE                      FALSE

## Answers

- 1) **False** - *The treble clef can also be called the G clef.*
- 2) **False** - *The lowest note is G.*
- 3) **True** - *F minor and Ab major have four flats in their key signature.*
- 4) **False** - *Bb is the enharmonic equivalent of A#*
- 5) **False** - *They have a similar range, but while the alto sax is in Eb the bassoon is in C.*
- 6) **True**
- 7) **False** - *It's a crotchet (quarter note) rest.*
- 8) **False** - *That's a double-dotted minim, which is the equivalent of 3 1/2 crotchets (quarter notes).*
- 9) **False** - *In meantone, C # and D b are not the same pitch.*
- 10) **True**
- 11) **False** - *That's an interrupted cadence.*
- 12) **False** - *The first note is an E double sharp, which is the enharmonic equivalent of an F sharp.*
- 13) **True**
- 14) **True**
- 15) **False** - *That's a diminished 7th chord.*