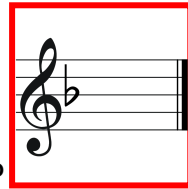
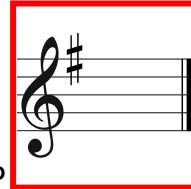


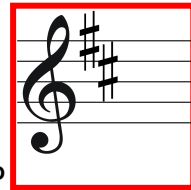
Mr L's Music Theory Quiz 3



1. What is the key signature for F major?



2. What is the key signature for G major?



3. What is the key signature for D major?

4. Which intervals in a major scale are a semitone apart? Eg/ notes 1-2, 2-3, 3-4 etc. **3-4 & 7-8** (2 marks)

5. How many semitones can you find in a major scale? **2**

6. The scale of C major has an F sharp. Circle True or False.

True **False**

7. What does ascending mean? **going up in pitch**

8. What does descending mean? **going down in pitch**

9. How many notes are in an octave scale? **8**

10. After the clef, what comes first the time signature or the **key signature**?  
(2 marks)

Total mark /12